

Installation Instructions For

Architectural Series Sign Brackets

Ceiling, Flag and Surface Mount

Ecoglo exit signs are to be installed only where there will be sufficient natural or artificial light to keep them charged whenever the building is occupied.

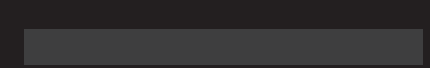
If unsure, contact Ecoglo

Ecoglo International Limited

Email: info@ecoglo.com

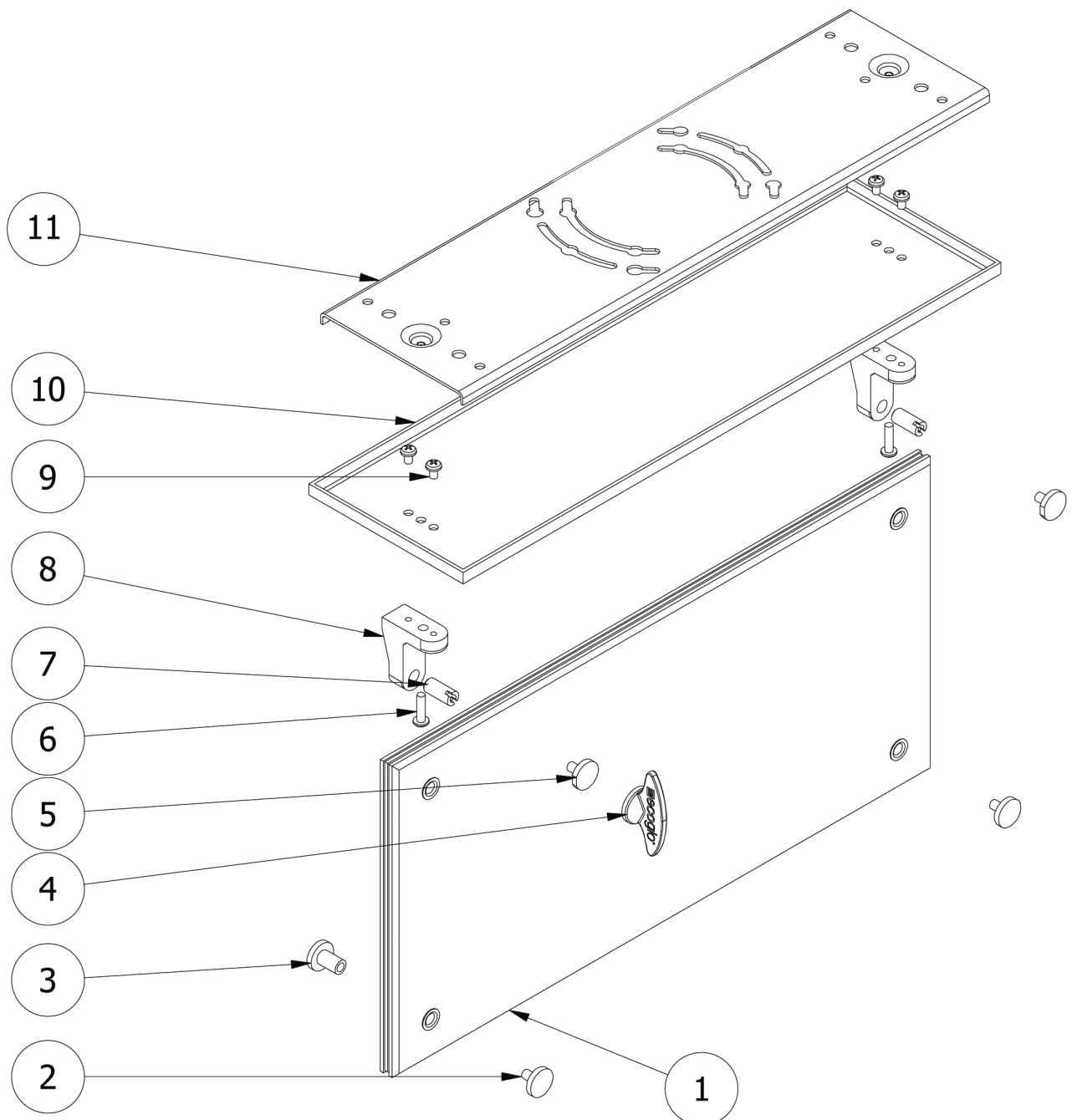
Ph: +64 3 348 3781

www.ecoglo.com



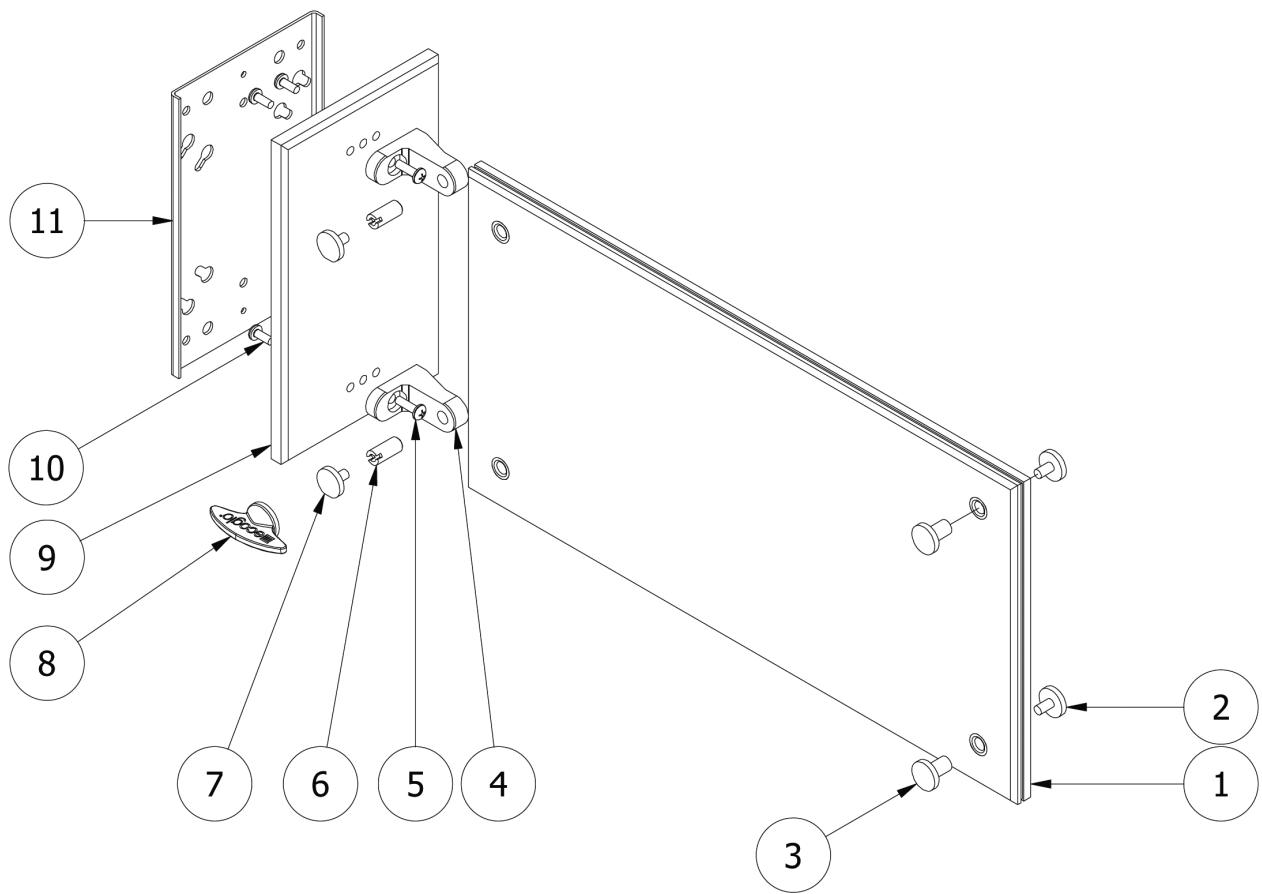
Architectural Series Ceiling Mount Bracket

1. Finger-tighten finishing screws (2) and nuts (3) into bottom corner holes of sign (1).
2. Prepare installation surface. Ensure surface is free of dirt, debris and residue.
3. If mounting sign directly to a ceiling, mark installation surface to ensure sign is properly aligned and level when mounted. Use mounting plate (11) as a template.
4. Drill hole pattern if necessary. Screw mounting plate (11) to installation surface.
5. Screw both L-Brackets (8) onto finishing plate (10) using the 4 x M4 6mm Pan Head Philips machine screws (9).
6. Screw finishing plate (10) onto mounting plate (11) through the centre of the attached L-Brackets (8) using the 2 x No. 8 32 x 16mm Philips machine screws (6).
7. Screw the 2 threaded pins (7) into the L-Bracket (8). Insert inner sign holes onto threaded pins (7) and secure with T-Screws (5) using the supplied tool (4).



Architectural Series Flag Mount Bracket

1. Finger-tighten finishing screws (2) and nuts (3) into outer corner holes of sign (1).
2. Prepare installation surface. Ensure surface is free of dirt, debris and residue.
3. If mounting sign directly to a wall, mark installation surface to ensure sign is properly aligned and level when mounted. Use mounting plate (11) as a template.
4. Drill hole pattern if necessary. Screw mounting plate (11) to installation surface.
5. Screw both L-Brackets (4) onto finishing plate (9) using the 4 x M4 6mm Pan Head Philips machine screws (10).
6. Screw finishing plate (9) onto mounting plate (11) through the centre of the attached L-Brackets (4) using the 2 x No.8 32 x 16mm Philips machine screws (5).
7. Screw the 2 threaded pins (6) into the L-Bracket (4). Insert inner sign holes onto threaded pins (6) and secure with T-Screws (7) using the supplied tool (8).



Architectural Series Surface Mount

1. Prepare installation surface. Ensure surface is free of dirt, debris and residue.
2. Mark wall surface to ensure sign (1) is properly aligned and level when mounted.
3. Drill hole pattern. Use a 6mm masonry bit for concrete anchors, 9mm bit for drywall Kwik Tog anchors.
4. Insert mounting sleeves (3) into corner holes of sign, fastening to spacers (2) on other side of sign.
5. Screw sign into wall using the 4 x No. 8 60mm screws (4).
6. Apply provided screw caps (5) to each corner.

