

Installation Instructions For

Sign Brackets

Flag and Ceiling Mounted Signs

Ecoglo exit signs are to be installed only where there will be sufficient natural or artificial light to keep them charged whenever the building is occupied.

If unsure, contact Ecoglo

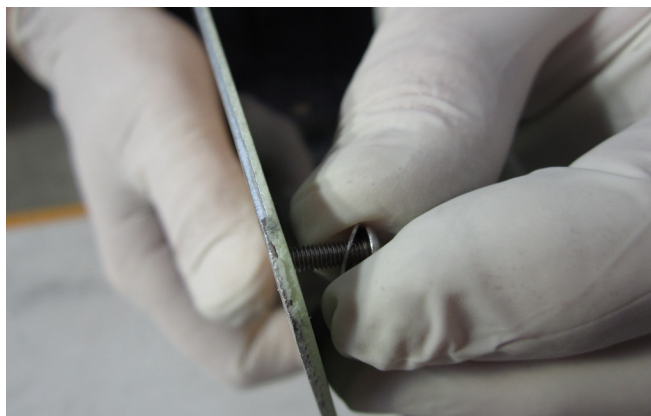
Ecoglo Australia
Email: info@ecoglo.com
Ph: +61 3 8691 5288
www.ecoglo.com.au

Ecoglo New Zealand
Email: info@ecoglo.com
Ph: +64 3 348 3781
www.ecoglo.co.nz

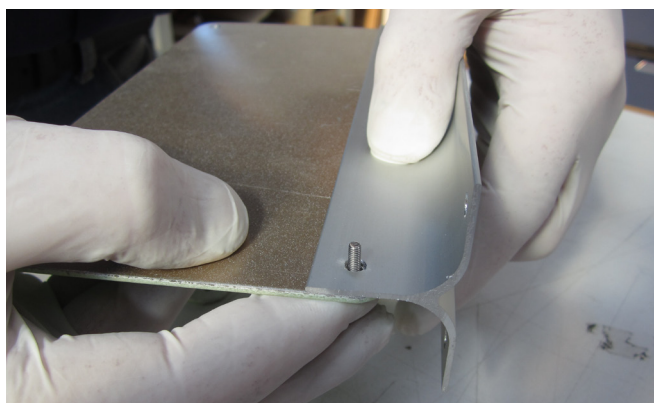


Sign Brackets Flag & Ceiling Mounted Signs

1. Assembling the Bracket



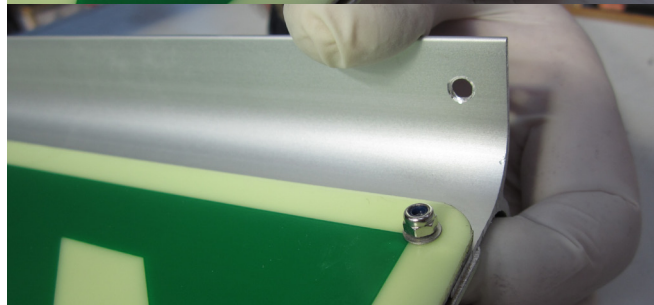
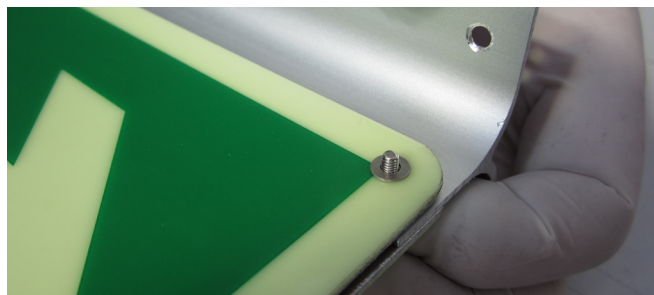
- Place a washer on screw and insert into top-left corner of first sign.



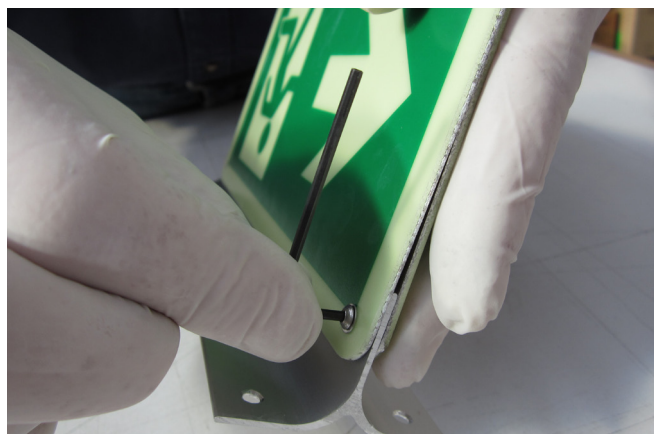
- Place mounting bracket over screw.



- If required, place second sign over screw onto opposing side of bracket. Ensure the signs are facing the correct direction.



- Place a washer and nut onto screw and tighten with fingers.



- Using supplied Hex Key and a crescent tighten the nut until flush with surface of sign.



- Repeat previous steps on all corners.

Sign Brackets Flag & Ceiling Mounted Signs

2. Installing the Bracket



- Once mounting location has been decided hold flat to wall or ceiling.
- When installing the sign make sure it looks level to the eye.



- Using screwdriver or battery drill mount sign using screws provided.

Mounting Surfaces

- Mounting surfaces:
- Timber: screw install (use all 4 holes in the bracket).
- Plasterboard, Concrete, Solid plaster: screw install with suitable anchors (use all 4 holes in the bracket).
- Steel: screw or rivet install as appropriate (use all 4 holes in the bracket).